

**VICO-MB®**
**VICO-MB®**

Il nastro VICO-MB® (bilanciato) è costituito da spirali a torsione alternata (una destra e una sinistra) collegate mediante traversini pre-ondulati.

Nelle tabelle alle pagine seguenti sono riportate alcune maglie caratteristiche dei nastri trasportatori VICO-MB®. Vorremmo comunque sottolineare che altre maglie ancora sono state e possono essere realizzate per rispondere a specifiche esigenze dei nostri clienti.

Riportiamo la sigla di quattro nastri trasportatori VICO-MB® e la chiave che ne permette la comprensione:  
 nastro trasportatore VICO-MB-W-66-90-12-16;  
 nastro trasportatore VICO-MB-W-80-120-16x10-18-SP;  
 nastro trasportatore VICO-MB-W-100-130-15-18-CH;  
 nastro trasportatore VICO-MB-LW-250-350-25x12-31.

The type VICO-MB® belt is a «balanced» belt and consists of alternating right and left-hand wire spirals connected together by pre-crimped connector wires.

The tables shown on the following pages give mesh characteristics for some VICO-MB® conveyor belts. Apart from the meshes in the tables, we supply belting to meet any particular specification or needs of the client.

The following four examples of VICO-MB® conveyor belts are typical; the code key is explained below:  
 conveyor belt VICO-MB-W-66-90-12-16;  
 conveyor belt VICO-MB-W-80-120-16x10-18-SP;  
 conveyor belt VICO-MB-W-100-130-15-18-CH;  
 conveyor belt VICO-MB-LW-250-350-25x12-31.

NASTRO VICO TIPO	TIPO DI BORDO (1)	PASSO SPIRALE (a) in decimi di mm	LUCE INTERNA SPIRALI (l) in decimi di mm	DIAM. FILO SPIRALI (d) in decimi di mm (2)	DIAM. FILO TRAVERSINI (c) in decimi di mm	(3)
BELT VICO TYPE	SELVAGE TYPE (1)	SPIRAL WIRE PITCH (a) tenths of mm	INTERNAL SPIRAL WIRE SPACING (l) tenths of mm	SPIRAL WIRE DIA. (d) tenths of mm (2)	CONNECTORS WIRE DIA. (c) tenths of mm	(3)
<b>MB</b>	W	66	90	12	16	—
<b>MB</b>	W	80	120	16x10*	18	SP
<b>MB</b>	W	100	130	15	18	CH
<b>MB</b>	LW	250	350	25x12**	31	—

1. I tipi di bordi che vengono comunemente realizzati per i nastri tipo VICO-MB® sono indicati dalle lettere:

**W** = bordi saldati;  
**L** = bordi con ganci a catena;  
**LW** = bordi con ganci a catena e successiva saldatura.  
 Per illustrazioni fotografiche vi rimandiamo alla pagina 62.

2. \* Spirali realizzate con filo piatto la cui sezione è di 1,6x1 mm.  
 \*\* Spirali realizzate con fili semi-tondo da 2,5x1,2 mm.

3. Dopo il numero indicante il diametro del traversino si possono trovare gruppi di lettere che richiamano speciali caratteristiche del nastro. Per i nastri VICO-MB®:

**CH** = catene di traino ai bordi;  
**RF** = bordi rinforzati;  
**SP** = spondine ai bordi.

Per illustrazioni fotografiche vi rimandiamo alle pagine 62, 63, 64, 65 e 66.

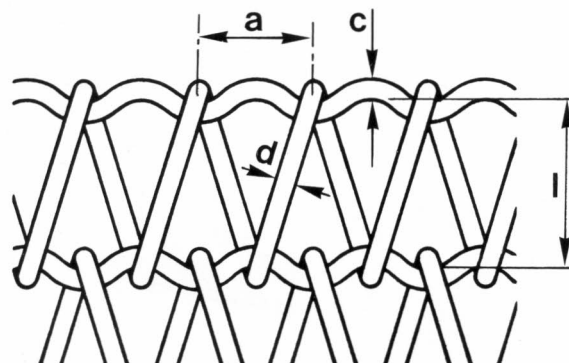
1. Most common selvages on the VICO-MB® belts are indicated by:

**W** = welded selvages;  
**L** = ladder selvages;  
**LW** = ladder welded selvages.  
 See photos on page 62.

2. \* Flat wire with 1.6x1.0 mm section.  
 \*\* Half-round wire 2.5x1.2 mm sectional dimensions.

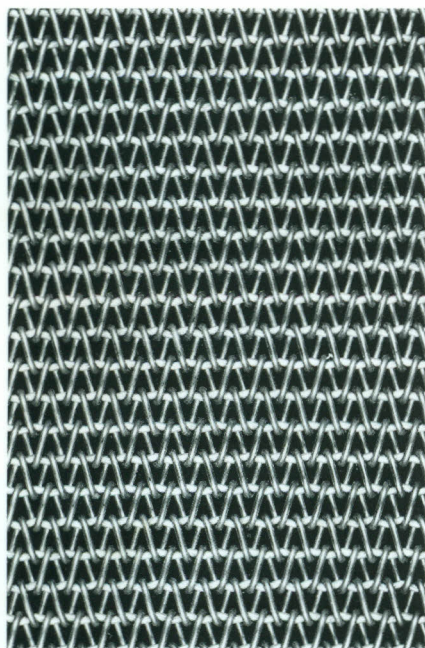
3. The letters which follow the number indicating the connector wire diameter refer to special belt characteristics. For VICO-MB® belts:

**CH** = chains driven belting;  
**RF** = reinforced selvages;  
**SP** = guard edges.  
 See photos on pages 62, 63, 64, 65 and 66.

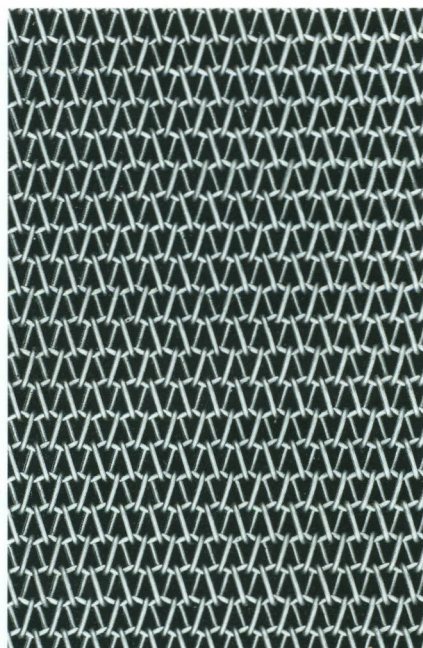
**VICO-MB®**


VICO-MB®	Luca della maglia mm ~	Peso kg/m <sup>2</sup> ~	Sezione resistente mm <sup>2</sup> /m	Max sollecitazione di lavoro kg/m di larghezza
VICO-MB®	Mesh opening mm ~	Weight kg/m <sup>2</sup> ~	Cross sec. area mm <sup>2</sup> /m	Max working tension kg/m of belt width
28-34-7-9	2.1 x 1.6	5.60	275	270
27-36-8-9	1.9 x 1.8	6.70	372	430
35-36-7-9	2.8 x 1.8	4.50	220	230
35-40-6-7	2.9 x 2.6	3	161	107
35-40-7-9	2.8 x 2.6	4.50	220	168
36-40-8-10	2.8 x 2	6	287	258
35-40-9-10	2.6 x 2	7.95	363	410
38-46-9-11	2.9 x 2.4	7.10	334	320
30-50-10-10	2 x 3	9	523	460
35-50-8-8	2.7 x 3.4	4.50	287	235
40-50-9-9	3.1 x 3.2	6.10	318	286
40-50-9-12	3.1 x 2.6	6.50	318	315
40-50-11-12	2.9 x 2.6	9.50	475	540
40-50-12 x 8-12	2.8 x 2.6	7.50	400	385
44-50-12-12	3.2 x 2.6	9.70	514	820

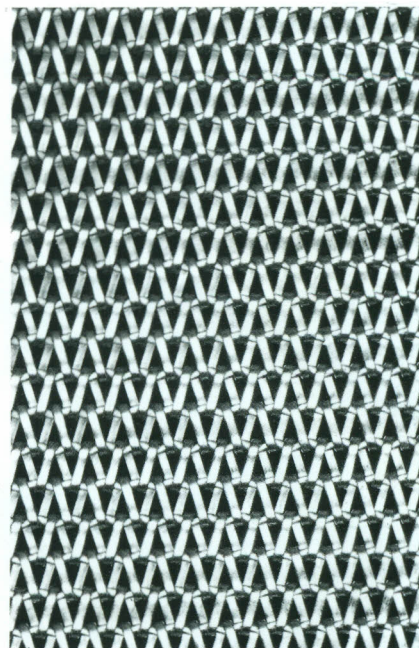
VICO-MB®	Luca della maglia mm ~	Peso kg/m <sup>2</sup> ~	Sezione resistente mm <sup>2</sup> /m	Max sollecitazione di lavoro kg/m di larghezza
VICO-MB®	Mesh opening mm ~	Weight kg/m <sup>2</sup> ~	Cross sec. area mm <sup>2</sup> /m	Max working tension kg/m of belt width
44-50-14 x 7-12	3 x 2.6	7.50	445	570
31-52-9-12	2.2 x 2.8	7.30	397	476
40-60-8-12	3.2 x 3.8	4.70	251	307
40-60-10-12	3 x 3.6	7	392	448
40-60-10-13	3 x 3.4	7.25	392	455
40-60-12 x 7-12	2.8 x 3.6	6.30	420	588
42-60-12-12	3 x 3.4	9.40	538	856
42-62-16-16	2.6 x 3	17.60	957	1955
62-62-15-15	4.7 x 3.2	10.70	570	855
55-68-12-14	4.3 x 4	7.30	411	595
50-70-8-10	4.2 x 5	2.90	201	140
50-70-10-12	4 x 4.6	4.90	314	316
50-70-10-15	4 x 4	6.30	314	357
50-70-12-12	3.8 x 4.6	7.20	452	601
50-70-12-15	3.8 x 4	8.30	452	635



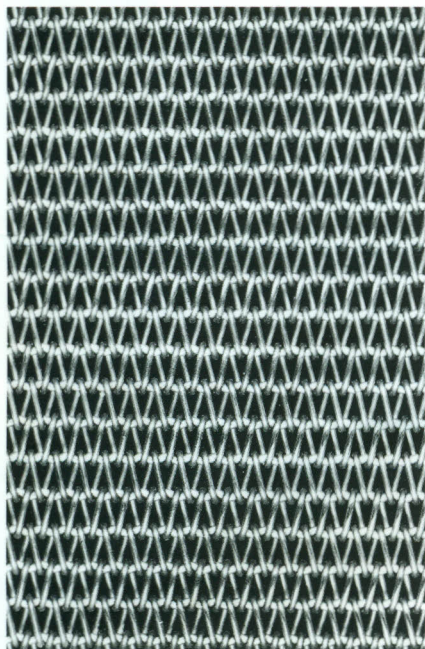
MB-38-46-9-11



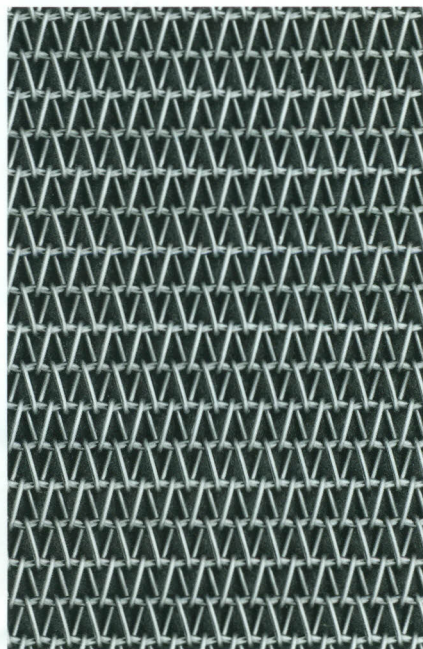
MB-35-50-8-8



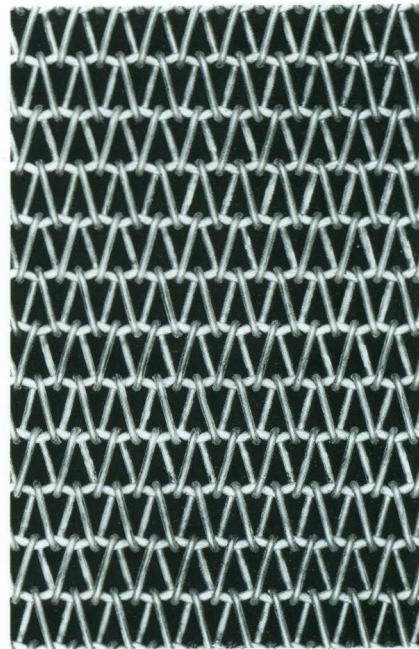
MB-44-50-14x7-12



MB-31-52-9-12



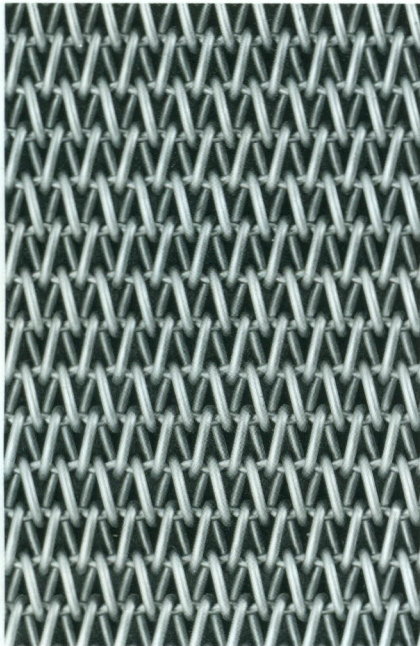
MB-40-60-8-12



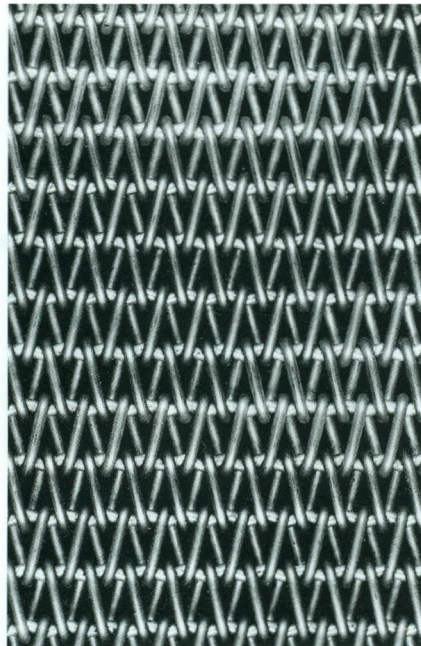
MB-50-70-10-12

VICO-MB®	Luce della maglia mm ~	Peso kg/m <sup>2</sup> ~	Sezione resistente mm <sup>2</sup> /m	Max sollecitazione di lavoro kg/m di larghezza
VICO-MB®	Mesh opening mm ~	Weight kg/m <sup>2</sup> ~	Cross sec. area mm <sup>2</sup> /m	Max working tension kg/m of belt width
50-70-12-16	3.8 x 3.8	8.75	452	649
50-70-15-15	3.5 x 4	12	706	1412
50-70-16-16	3.4 x 3.8	14.20	804	1690
50-80-12-15	3.8 x 5	7.60	452	632
50-80-15-15	3.5 x 5	11.20	706	1412
50-80-15-18	3.5 x 4.4	12.50	706	1553
50-80-16-16	3.4 x 4.8	13.30	804	1690
52-80-14-15	3.8 x 5	10.10	592	947
66-80-15-15	5.1 x 5	8.30	535	856
60-80-10-16	5 x 4.8	4.30	196	137
80-80-12-16	6.8 x 4.8	5.40	282	254
86-80-12-17	7.4 x 4.6	5.20	263	276
50-90-10-16	4 x 5.8	5.80	314	367
60-90-9-15	5.1 x 5	3.90	212	154
66-90-10-15	5.6 x 6	4.30	238	226

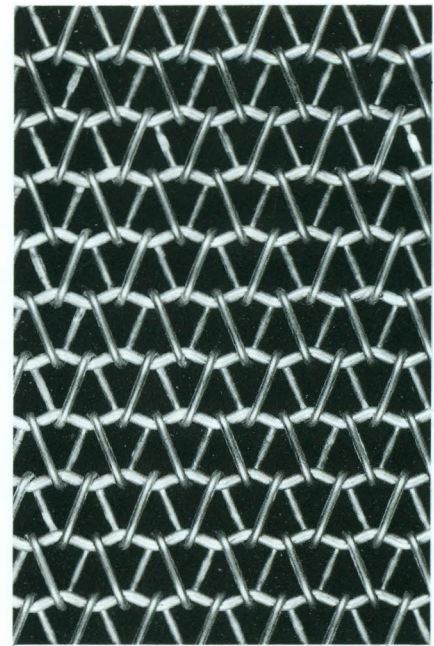
VICO-MB®	Luce della maglia mm ~	Peso kg/m <sup>2</sup> ~	Sezione resistente mm <sup>2</sup> /m	Max sollecitazione di lavoro kg/m di larghezza
VICO-MB®	Mesh opening mm ~	Weight kg/m <sup>2</sup> ~	Cross sec. area mm <sup>2</sup> /m	Max working tension kg/m of belt width
66-90-12-15	5.4 x 6	5.60	342	427
66-90-12-16	5.4 x 5.8	5.80	342	430
66-90-12-18	5.4 x 5.4	6.50	342	438
66-90-15-15	5.1 x 6	7.70	535	730
66-90-15x10-16	5.1 x 5.8	6.70	454	545
66-90-15-16	5.1 x 5.8	7.90	535	760
66-90-15-18	5.1 x 5.4	8.80	535	776
66-90-16-16	5 x 5.8	9.45	609	1035
66-90-17-20	4.9 x 5	11.90	687	1354
66-90-18-20	4.8 x 5	12.90	771	1880
66-90-20-22	4.6 x 4.6	17.85	952	2600
74-90-20-20	5.4 x 5	14.30	849	2200
85-95-14-18	7.1 x 5.9	7	362	435
50-100-12-16	3.8 x 6.8	6.90	452	640
50-100-15-15	3.5 x 7	9.90	706	1412



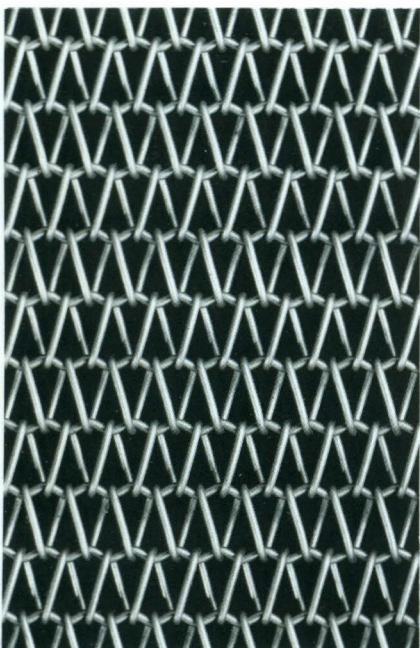
MB-50-70-15-15



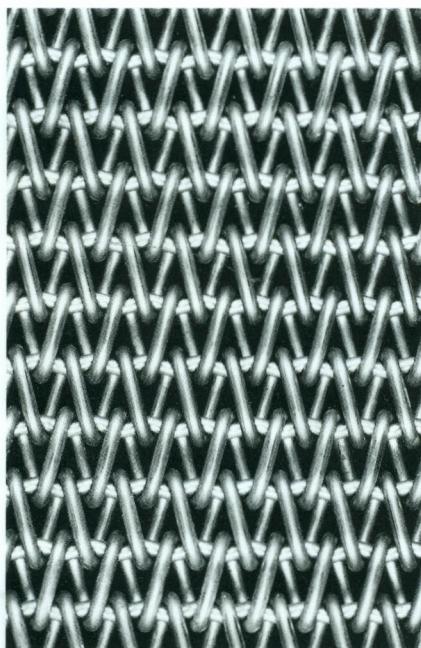
MB-50-80-15-18



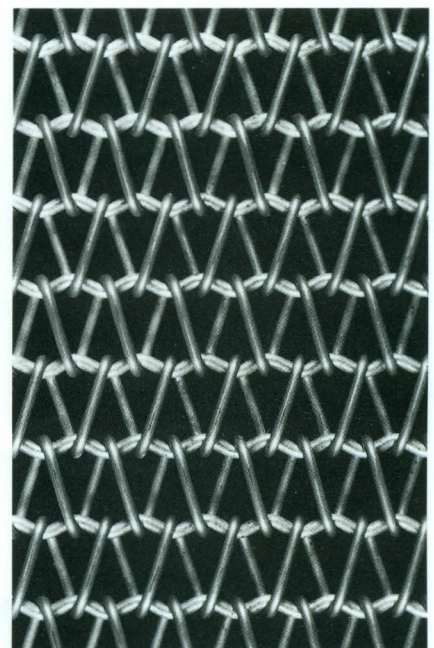
MB-80-80-12-16



MB-66-90-12-16



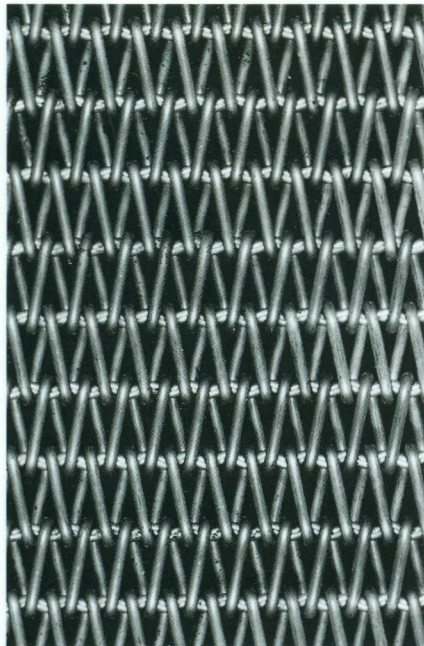
MB-66-90-20-22



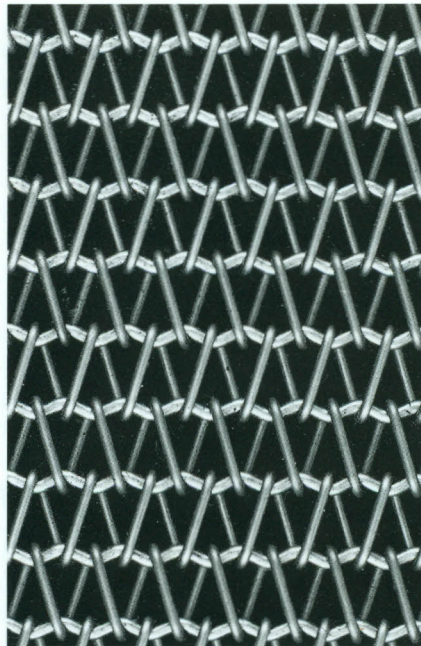
MB-85-95-14-18

VICO-MB®	Luce della maglia mm ~	Peso kg/m <sup>2</sup> ~	Sezione resistente mm <sup>2</sup> /m	Max sollecitazione di lavoro kg/m di larghezza
VICO-MB®	Mesh opening mm ~	Weight kg/m <sup>2</sup> ~	Cross sec. area mm <sup>2</sup> /m	Max working tension kg/m of belt width
50-100-16-20	3.4 × 6	13	804	1730
50-100-20-20	3 × 6	21	1256	3515
80-100-12-15	6.8 × 7	4.50	282	338
80-100-12-18	6.8 × 6.4	5.25	282	356
80-100-15-18	6.5 × 6.4	8.30	441	620
80-100-18-20	6.2 × 6	10.70	636	954
80-110-13-18	6.7 × 7.4	6	331	437
80-110-20-20	6 × 7	11.90	785	1766
90-110-15-15	7.5 × 8	6	392	398
90-110-15-20	7.5 × 7	6.90	392	635
110-110-15-20	9.5 × 7	6.40	321	481
66-120-12-16	5.4 × 8.8	5	342	430
66-120-12-20	5.4 × 8	6.40	342	448
66-120-13-18	5.3 × 8.4	6	402	523
66-120-16 × 10-16	5 × 8.8	6.40	484	585

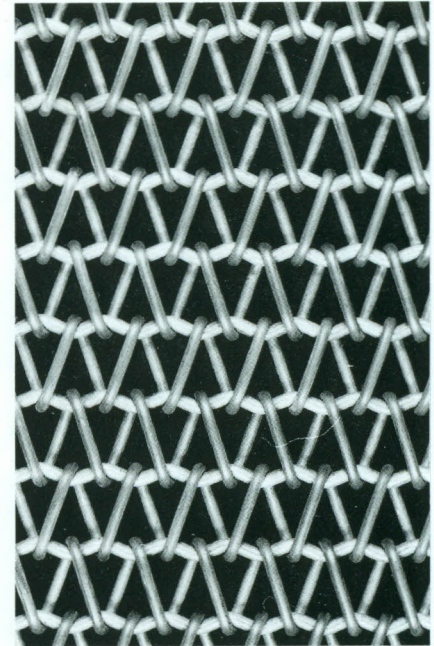
VICO-MB®	Luce della maglia mm ~	Peso kg/m <sup>2</sup> ~	Sezione resistente mm <sup>2</sup> /m	Max sollecitazione di lavoro kg/m di larghezza
VICO-MB®	Mesh opening mm ~	Weight kg/m <sup>2</sup> ~	Cross sec. area mm <sup>2</sup> /m	Max working tension kg/m of belt width
66-120-15-15	5.1 × 9	7.35	535	802
66-120-15-20	5.1 × 8	8.20	535	844
66-120-18-22	4.8 × 7.6	12	771	1930
74-120-20-20	5.4 × 8	11.50	849	2207
80-120-12-15	6.8 × 9	4.30	282	338
80-120-12-18	6.8 × 8.4	5	282	356



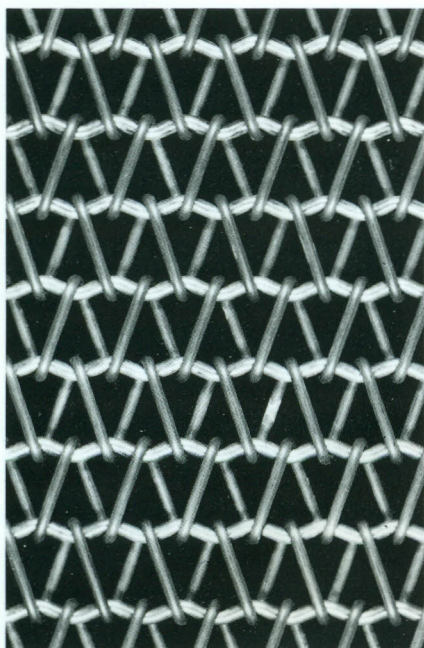
MB-50-100-16-20



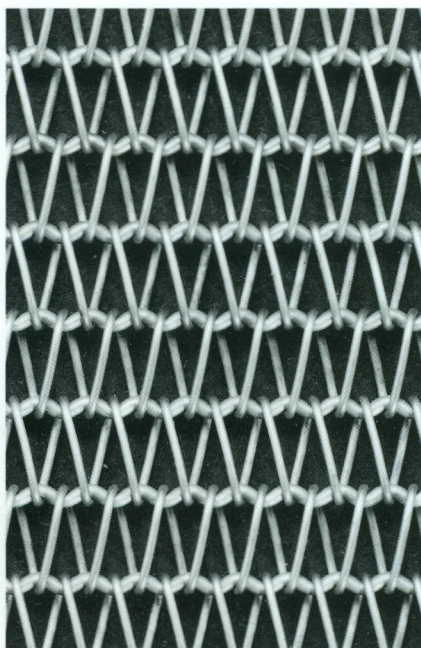
MB-80-100-15-18



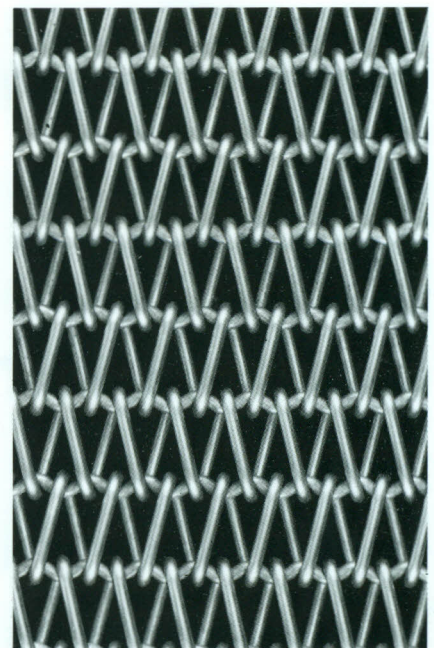
MB-80-100-18-20



MB-90-110-15-20



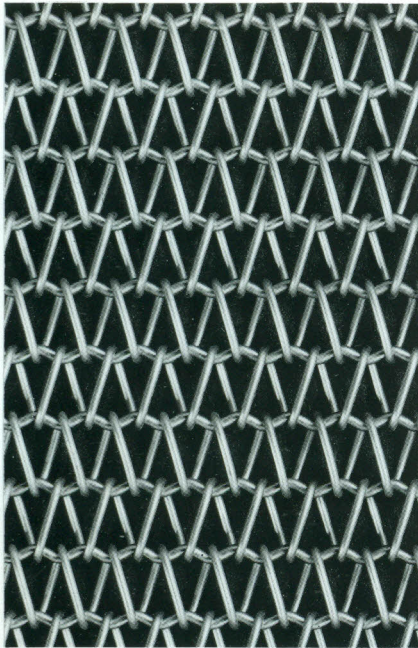
MB-66-120-12-20



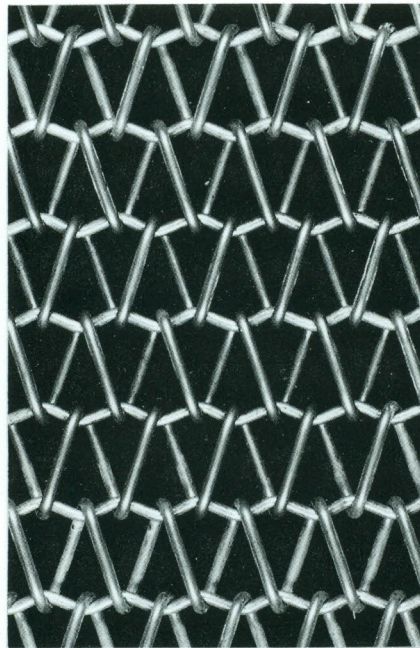
MB-74-120-20-20

VICO-MB®	Luce della maglia mm ~	Peso kg/m <sup>2</sup> ~	Sezione resistente mm <sup>2</sup> /m	Max sollecitazione di lavoro kg/m di larghezza
VICO-MB®	Mesh opening mm ~	Weight kg/m <sup>2</sup> ~	Cross sec. area mm <sup>2</sup> /m	Max working tension kg/m of belt width
80-120-15-18	6.5 x 8.4	6.70	441	620
80-120-16-18	6.4 x 8.4	7.40	502	762
80-120-18-22	6.2 x 7.6	10	636	973
100-120-12-20	8.8 x 8	4.20	226	230
100-120-16-16	8.4 x 8.8	6.20	402	450
100-120-25-25	7.5 x 7	16.90	981	2100
120-120-11-20	10.9 x 8	3.70	158	168
40-130-15-20	2.5 x 9	10.80	883	2030
50-130-15-16	3.5 x 9.8	9.40	706	1421
96-130-15-20	8.1 x 9	5.90	368	550
100-130-12-18	8.8 x 9.4	4	226	230
100-130-15-20	8.5 x 9	5.80	353	551
100-130-15-25	8.5 x 8	7.50	353	635
100-130-26-26	7.4 x 7.8	17.70	1061	2560
50-140-16-18	3.4 x 10.4	10.40	804	1768

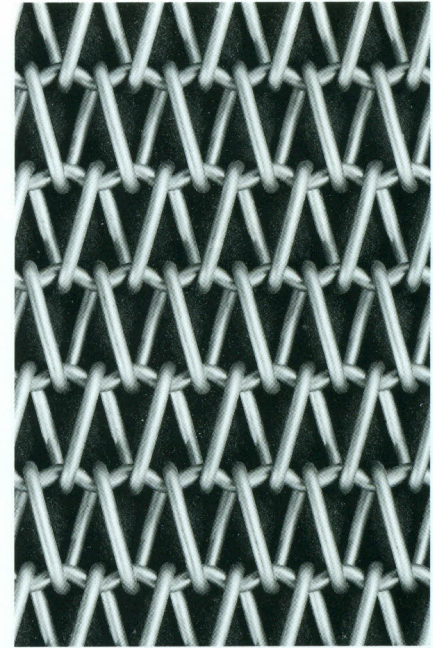
VICO-MB®	Luce della maglia mm ~	Peso kg/m <sup>2</sup> ~	Sezione resistente mm <sup>2</sup> /m	Max sollecitazione di lavoro kg/m di larghezza
VICO-MB®	Mesh opening mm ~	Weight kg/m <sup>2</sup> ~	Cross sec. area mm <sup>2</sup> /m	Max working tension kg/m of belt width
42-150-16-16	2.6 x 11.8	11.80	957	1914
100-150-18-20	8.2 x 11	7.50	508	920
100-150-20-22	8 x 10.6	10	628	1180
100-150-22-25	7.8 x 10	11.60	760	1921
100-150-22-27	7.8 x 9.6	12.30	760	1983
100-150-25 x 10-25	7.5 x 10	8.15	500	900



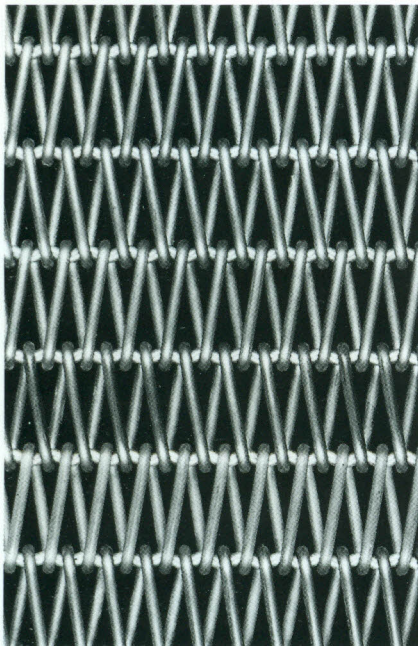
MB-80-120-15-18



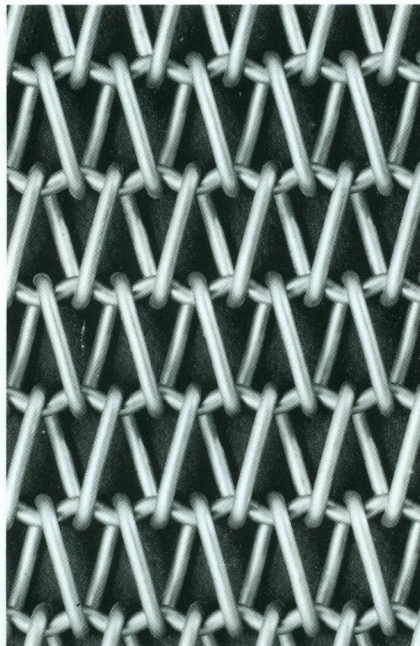
MB-100-120-16-16



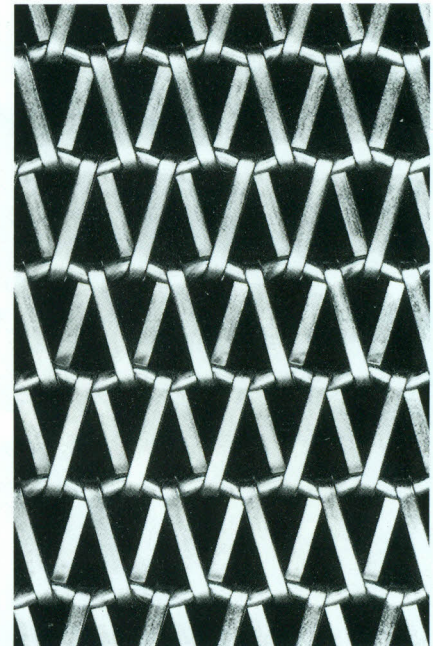
MB-100-130-15-20



MB-50-140-16-18



MB-100-150-22-25



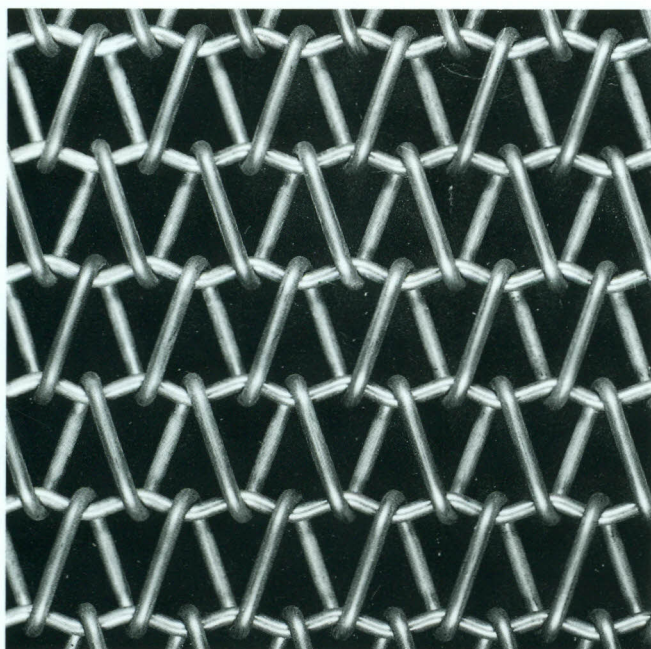
MB-100-150-25x10-25

VICO-MB®	Luca della maglia mm ~	Peso kg/m <sup>2</sup> ~	Sezione resistente mm <sup>2</sup> /m	Max sollecitazione di lavoro kg/m di larghezza
VICO-MB®	Mesh opening mm ~	Weight kg/m <sup>2</sup> ~	Cross sec. area mm <sup>2</sup> /m	Max working tension kg/m of belt width
100-150-25-27	7.5 × 9.6	15.50	981	2354
100-150-25-30	7.5 × 9	17	981	2550
130-150-20 × 10-25	11 × 10	6	307	310
130-150-18-25	11.2 × 10	7.10	391	705
130-150-20-27	11 × 9.6	9	483	990
130-150-22-22	10.8 × 10.6	8.80	584	934
130-150-22-27	10.8 × 9.6	10.30	584	1160
134-150-28-30	10.6 × 9	15.90	919	1970
66-160-20-22	4.6 × 11.6	12.50	952	2600
80-160-16-18	6.4 × 12.4	6.60	338	550
85-160-20 × 10-23*	6.5 × 11.4	8.70	369	549

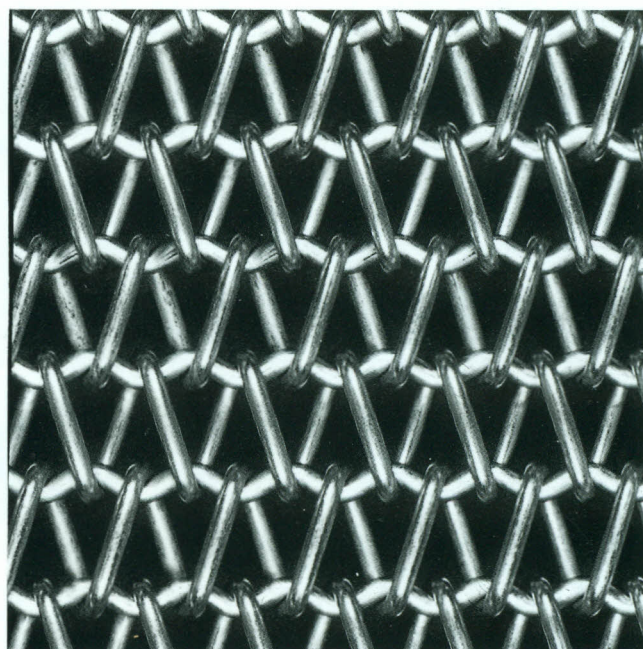
VICO-MB®	Luca della maglia mm ~	Peso kg/m <sup>2</sup> ~	Sezione resistente mm <sup>2</sup> /m	Max sollecitazione di lavoro kg/m di larghezza
VICO-MB®	Mesh opening mm ~	Weight kg/m <sup>2</sup> ~	Cross sec. area mm <sup>2</sup> /m	Max working tension kg/m of belt width
120-160-18-20	10.2 × 12	6.30	424	690
100-170-20-25	8 × 12	9.60	628	1383
160-170-22-25	13.8 × 12	7	475	641
80-180-22-25	5.8 × 13	12.80	1038	2439
100-180-32-35	6.8 × 11	25.50	1608	4510
120-180-18-22	10.2 × 13.6	6.20	424	705
120-180-20-22	10 × 13.6	7.20	523	790

\* Nastri realizzati con filo delle spirali semi-tondo per applicazione in essiccatoi per tranciati e sfogliati.

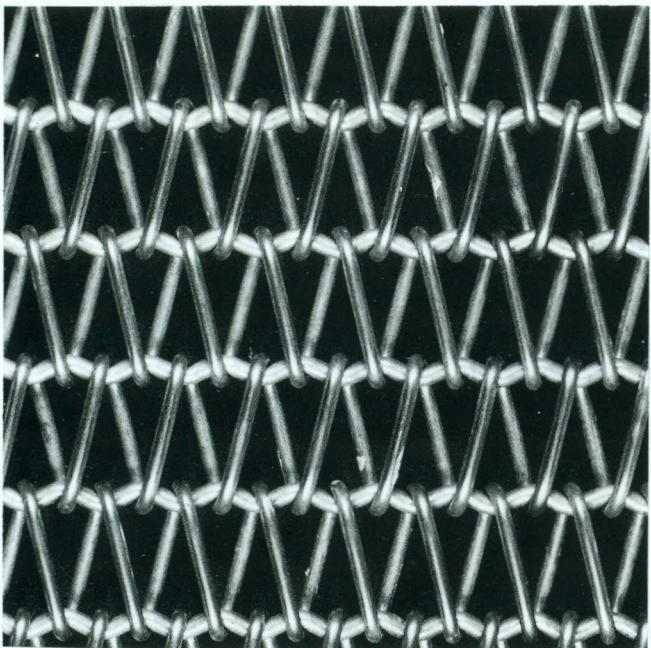
\* Conveyor belts with spirals made of half-round wires used in drying equipment for processing panels and wood laminates.



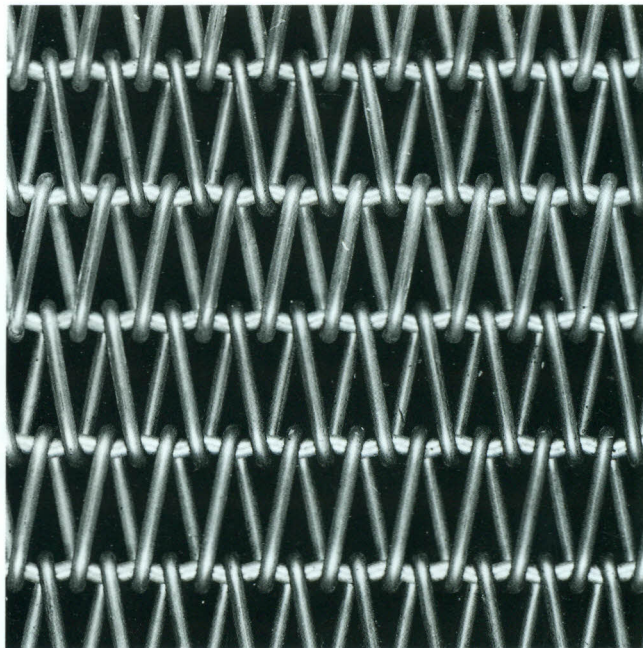
MB-130-150-22-22



MB-134-150-28-30



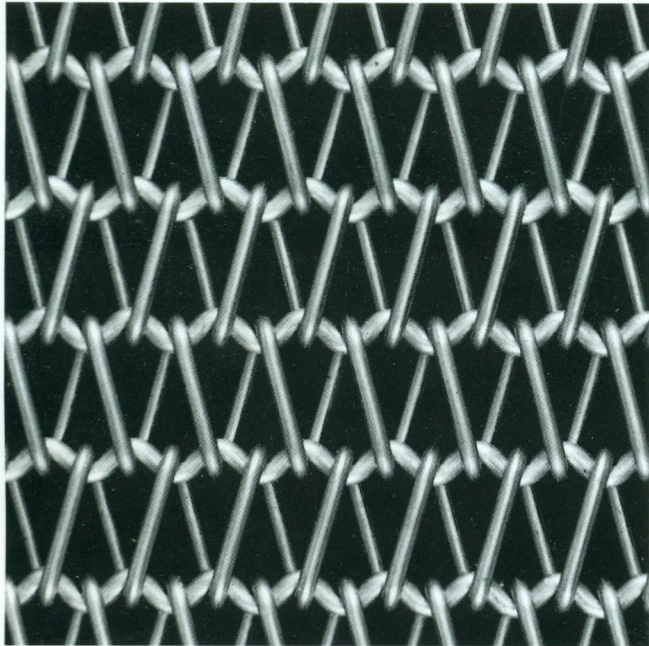
MB-100-170-20-25



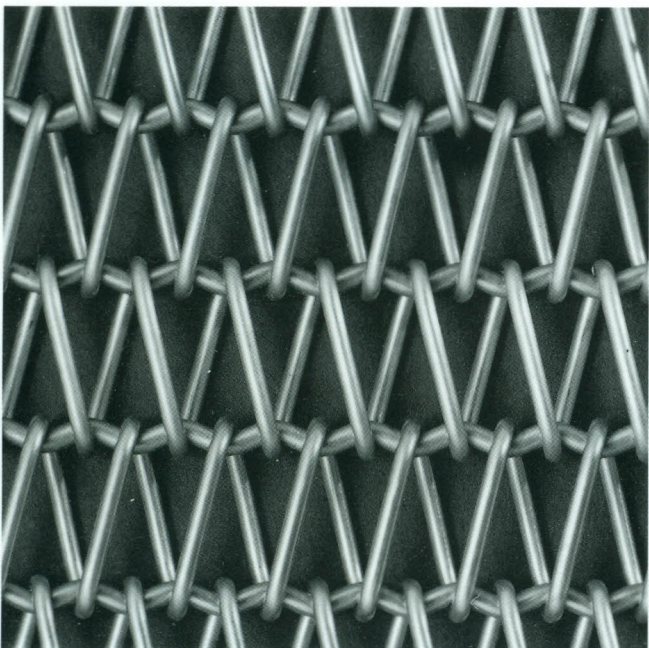
MB-80-180-22-25

VICO-MB®	Luca della maglia mm ~	Peso kg/m <sup>2</sup> ~	Sezione resistente mm <sup>2</sup> /m	Max sollecitazione di lavoro kg/m di larghezza
VICO-MB®	Mesh opening mm ~	Weight kg/m <sup>2</sup> ~	Cross sec. area mm <sup>2</sup> /m	Max working tension kg/m of belt width
120-180-23-30	9.7 × 13	11.80	692	1215
120-180-25-30	9.5 × 13	13.40	818	1475
120-180-32-35	8.8 × 11	22	1340	3750
166-190-25-30	14.1 × 13	9.90	591	768
96-200-18-20	7.8 × 16	6.30	530	960
150-200-20×10-23*	13 × 15.4	4.20	209	275
160-200-25×11-27	13.5 × 14.6	5.80	343	308
84-205-24-30	6 × 14.5	14.30	1077	2970
100-210-14-25	8.6 × 16	5	307	280
120-210-35-40	8.5 × 13	24.80	1603	4490
160-210-18-25	14.2 × 16	5	318	325
165-210-22-25	14.3 × 16	6.90	460	621
165-210-25-30	14 × 15	9.20	595	833
165-210-30-40	13.5 × 13	15.40	856	1720
120-220-25-30	9.5 × 16	11.40	818	1475

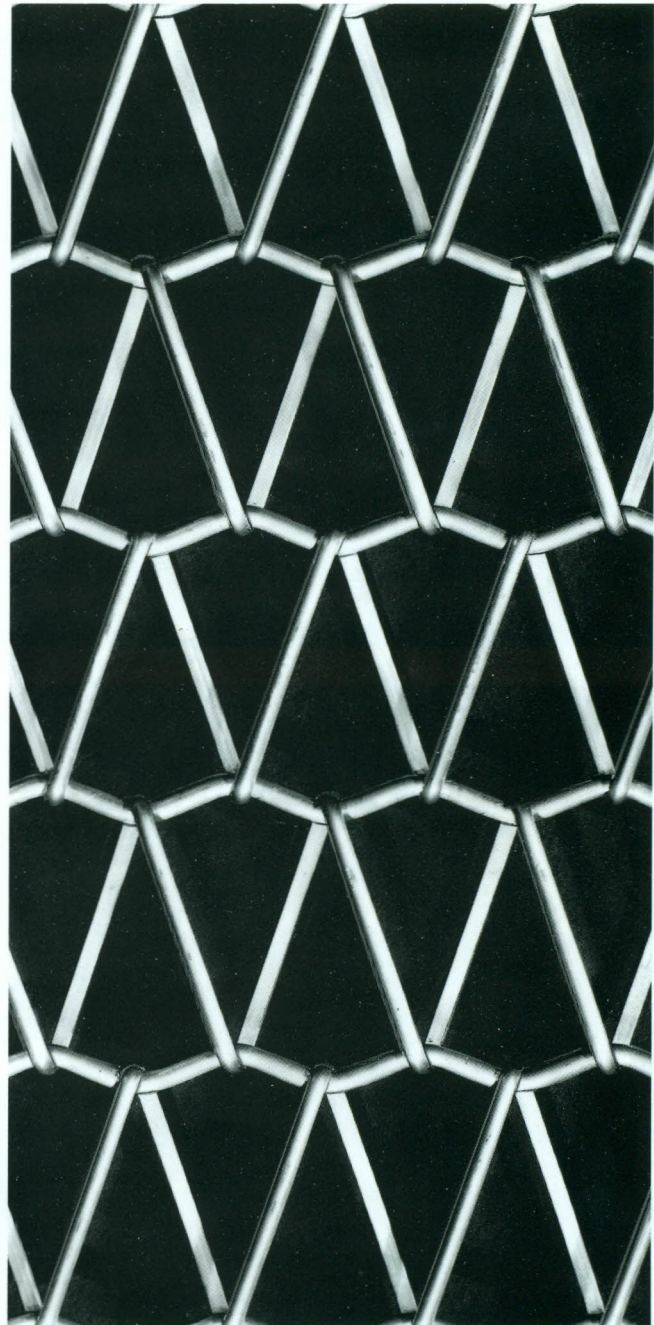
VICO-MB®	Luca della maglia mm ~	Peso kg/m <sup>2</sup> ~	Sezione resistente mm <sup>2</sup> /m	Max sollecitazione di lavoro kg/m di larghezza
VICO-MB®	Mesh opening mm ~	Weight kg/m <sup>2</sup> ~	Cross sec. area mm <sup>2</sup> /m	Max working tension kg/m of belt width
160-220-28-40	13.2 × 14	14.10	769	1620
86-240-15-30	7.1 × 18	7.60	410	780
220-240-30-40	19 × 16	11.70	642	1035
130-250-22-30	10.8 × 19	8.70	584	1250
160-250-23-25	13.7 × 20	7	519	785
180-250-18-22	16.2 × 20.6	4.10	282	260
180-250-25-30	15.5 × 19	8.80	545	710
200-250-25×12-31*	17.5 × 18.8	6	245	332
250-250-25×12-31*	22.5 × 18.8	5.50	196	270
220-300-20-25	20 × 25	4.10	285	278
220-300-25-40	19.5 × 22	8	446	480
120-330-30-40	9 × 25	15	1178	3200
250-350-30-35	22 × 28	8	565	678
250-350-25×12-31*	22.5 × 28.8	3.50	196	270
250-350-40-50	21 × 25	15.50	1005	1560



MB-120-180-25-30



MB-120-220-25-30

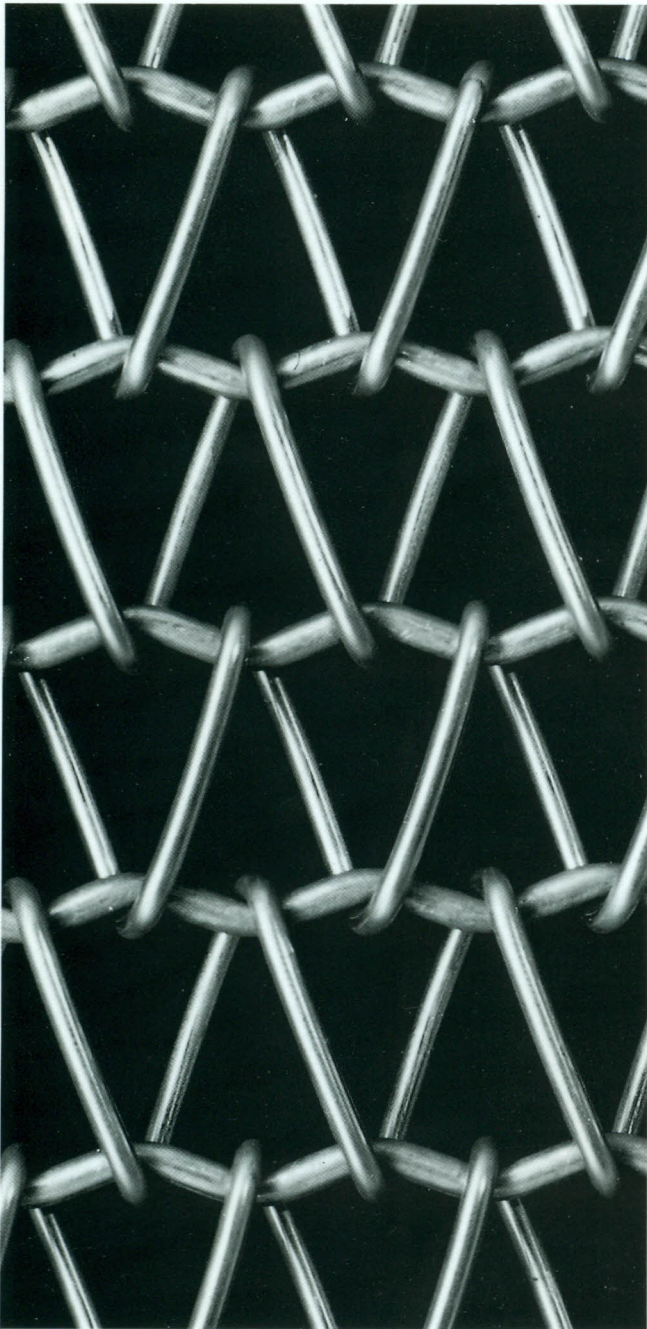


MB-250-350-25 × 12-31\*

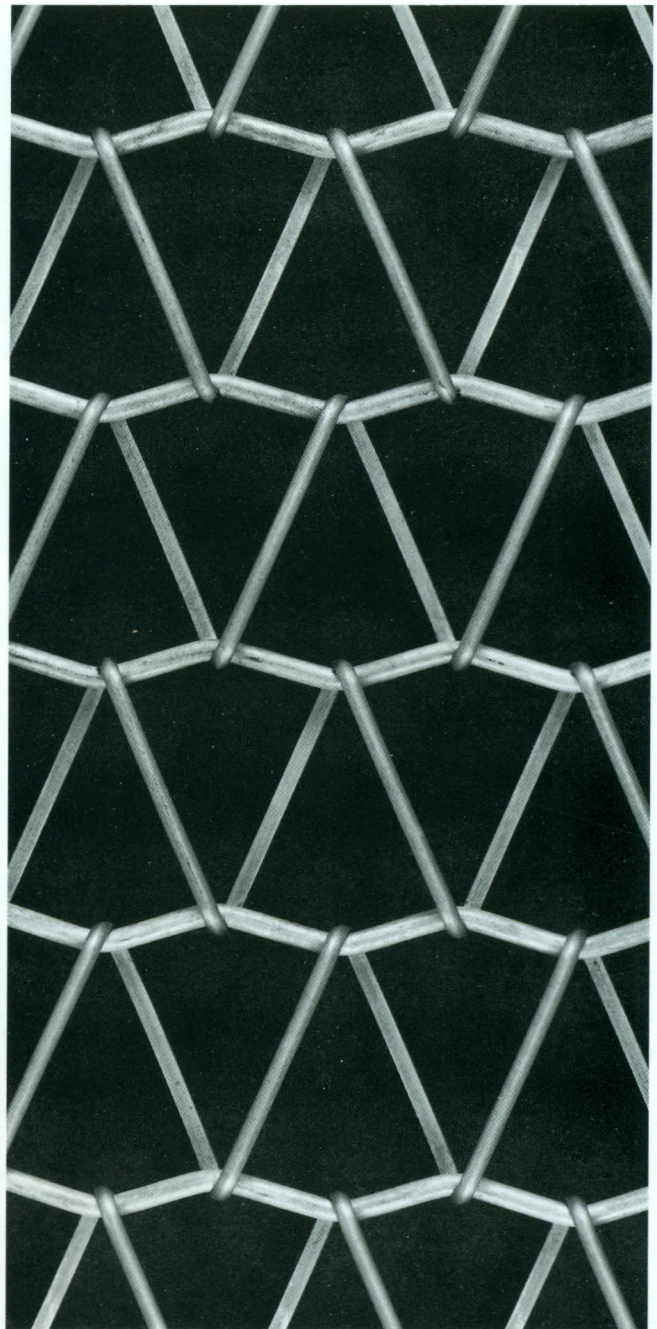
VICO-MB®	Luce della maglia mm ~	Peso kg/m <sup>2</sup> ~	Sezione resistente mm <sup>2</sup> /m	Max sollecitazione di lavoro kg/m di larghezza
VICO-MB®	Mesh opening mm ~	Weight kg/m <sup>2</sup> ~	Cross sec. area mm <sup>2</sup> /m	Max working tension kg/m of belt width
300-350-40-50	26 x 25	14	837	1255
300-350-60-60	24 x 23	30	1884	2400
300-350-60-65	24 x 22	32	1884	2470
300-350-25x12-31*	30.5 x 28.8	3.20	148	203
330-350-60-65	27 x 22	31.30	1713	2055
150-400-25-50	12.5 x 30	11.30	654	850
500-800-60-65	44 x 65	15.50	1130	1345
500-800-63-80	43.7 x 65	19.20	1246	1693

\* Nastri realizzati con filo delle spirali semi-tondo per applicazioni in essiccatoi per tranciati e sfogliati.

\* Conveyor belts with spirals made of half-round wires used in drying equipment for processing panels and wood laminates.



MB-300-350-40-50



MB-330-350-25 x 12-31\*